

## AE2 EV Fuse



### DESCRIPTION

Adler AE2 series EV fuses are specially engineered and tested to provide best-in-class protection performance in protecting high power battery charging and managing systems of Electrical Vehicles and Hybrid Electrical Vehicles, up to 500 Vdc/500Vac in ratings from 10 A to 50 A.

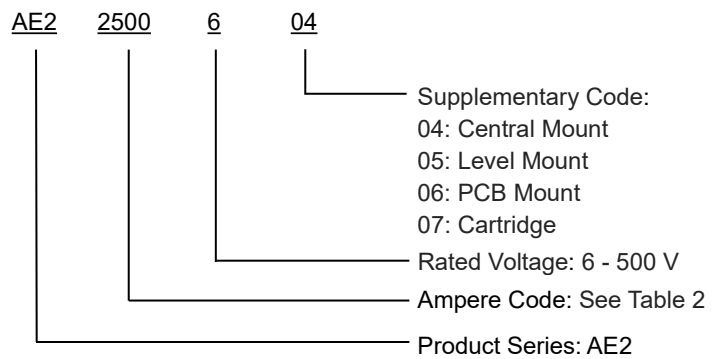
### AGENCY INFORMATION:

- Ref. To UL 248-20, ISO 8820-8, GB/T 31465.6
- Approval: TÜV and UL
- Manufactured under IATF 16949 quality system
- RoHS and REACH Compliant

### FEATURES:

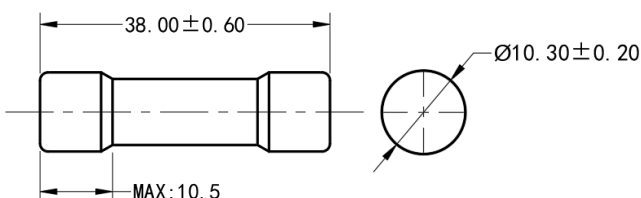
- 500 Vdc/500Vac automotive fuse
- Rated Current: 10-50 A
- Max. BC: 20 kA@500 Vdc/500Vac
- Min. BC: 2 In@500 Vdc/500Vac
- Time Constant:  $2 \pm 0.5$  ms
- Dimensions: 10x38 mm
- General purpose fuse for EV/HEV auxiliary protection
- Recommended fuse holder: BH114

### PART NUMBERING SYSTEM

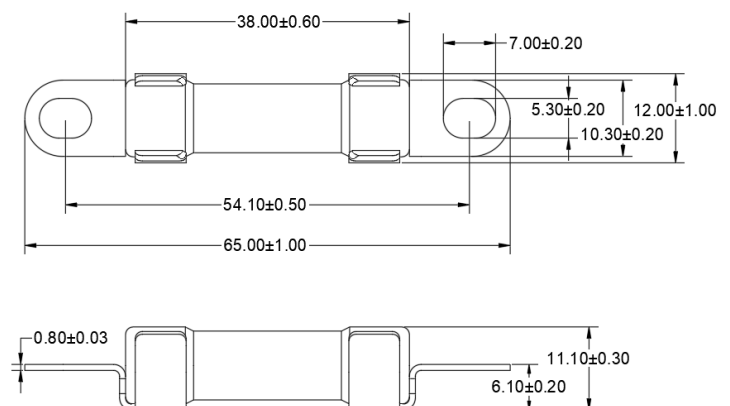


### DIMENSIONS (mm)

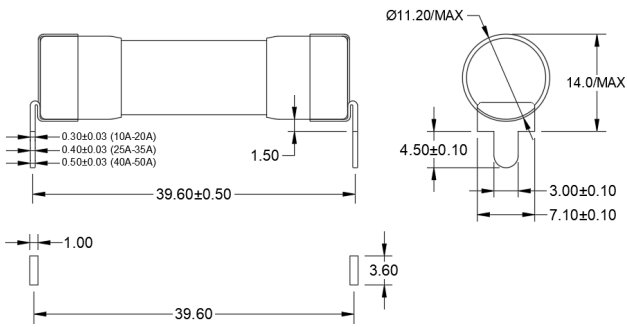
#### AE2xxxx607



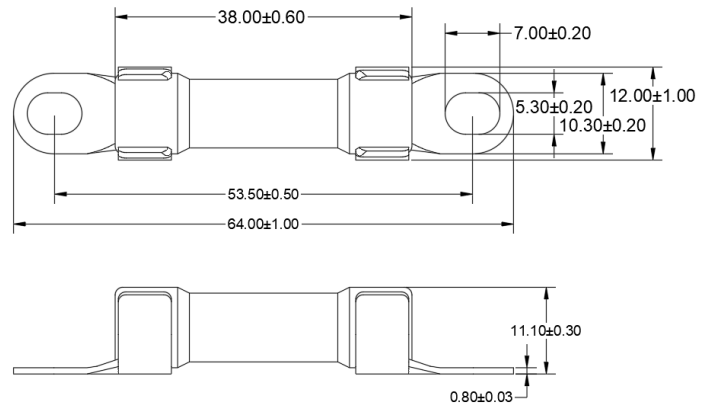
#### AE2xxxx604



## AE2xxxx606



## AE2xxxx605



## PACKING INFORMATION

Fuse Size	Box Specifications (mm)	Packing Quantity / Per Container	Weight / PCS (g)	Mounting Method	Mounting Requirements
AE22100607	410×215×160	1200 pcs	7.6±3%	-	-
AE22100604	410×215×160	720 pcs	11.5±3%	M5	4.5±1
AE22100605	410×215×160	720 pcs	11.5±3%	-	-
AE22100606	410×215×160	1200 pcs	8.6±3%	M5	4.5±1

Table1

## ELECTRICAL SPECIFICATIONS

Part Number / Configurations				Rated Current	Ampere Code	Breaking Capacity	I <sup>2</sup> t (A <sup>2</sup> s)		Dissipation (1.0In W)	Certifications	
Cartridge	Central Mount	Level Mount	PCB Mount				Pre-Arcing	Total		TÜV	UL
AE22100607	AE22100604	AE22100605	AE22100606	10 A	2100	20 kA@ 500 Vdc/500 Vac	160	255	3	○	●
AE22150607	AE22150604	AE22150605	AE22150606	15 A	2150		370	620	2.5	●	●
AE22200607	AE22200604	AE22200605	AE22200606	20 A	2200		820	1360	3.5	●	●
AE22250607	AE22250604	AE22250605	AE22250606	25 A	2250		1060	1505	3.5	●	●
AE22300607	AE22300604	AE22300605	AE22300606	30 A	2300		1270	2190	4.7	●	●
AE22350607	AE22350604	AE22350605	AE22350606	35 A	2350		1745	2936	4.8	●	●
AE22400607	AE22400604	AE22400605	AE22400606	40 A	2400		1980	3688	5.5	●	●
AE22450607	AE22450604	AE22450605	AE22450606	45 A	2450		2200	5219	5.8	●	●
AE22500607	AE22500604	AE22500605	AE22500606	50 A	2500		3010	6750	6.8	●	●

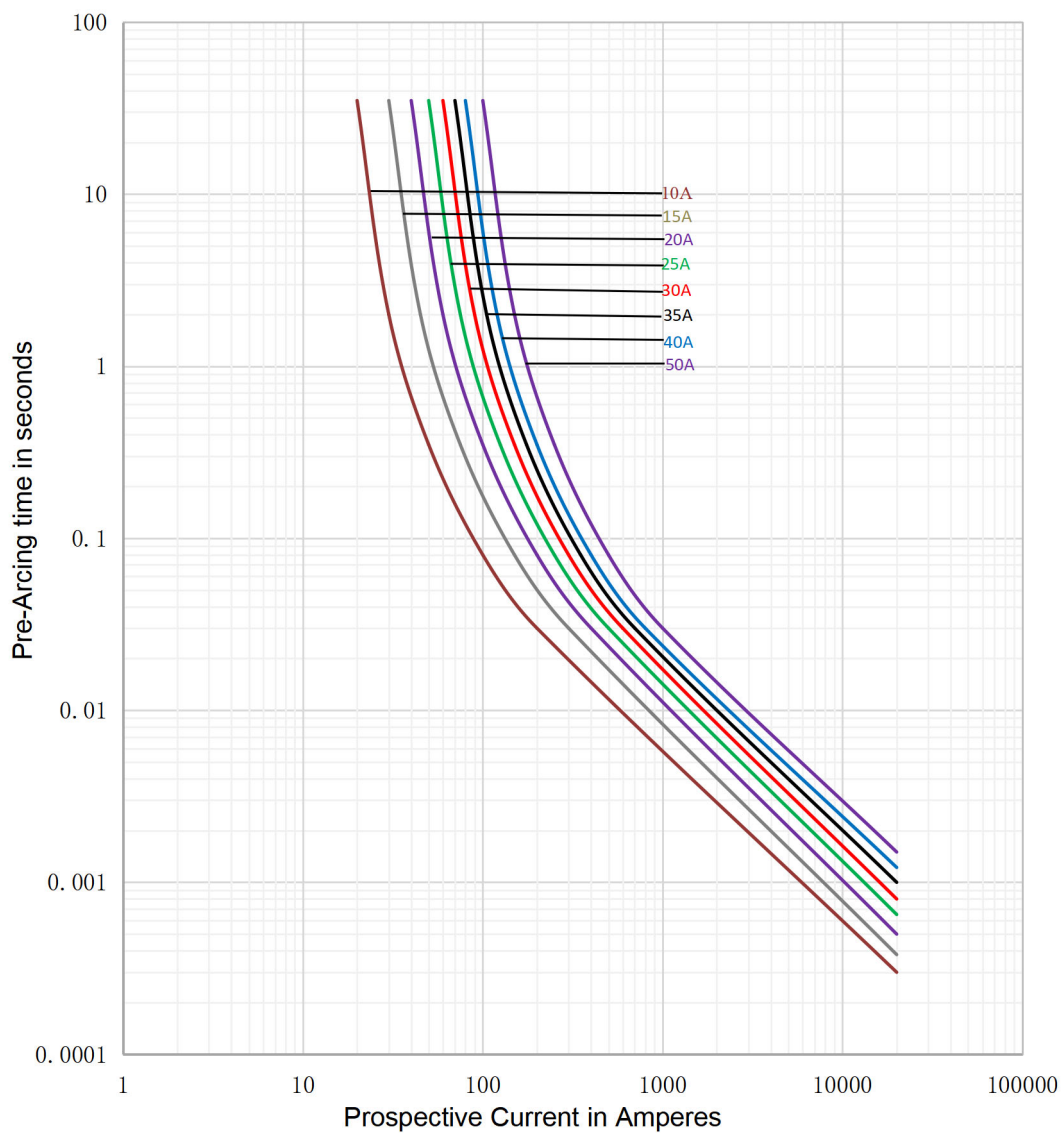
Table 2

Note: 1. ●--- Certification is ready,  
 2. ○---Certificate is pending  
 3. UL file: E506666、E485737  
 TUV file: J 50407230  
 4. I<sup>2</sup>t base on 1.0 In test

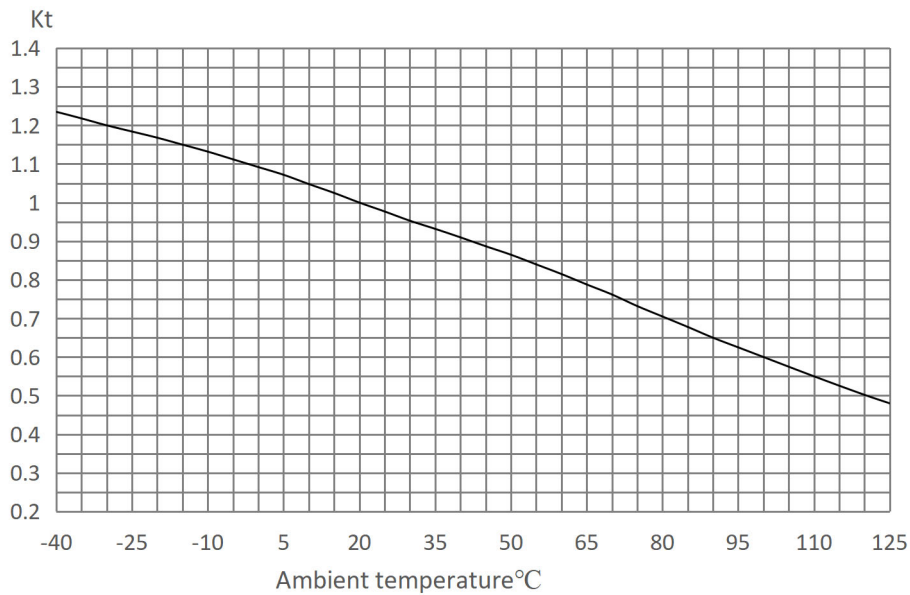
**TIME VS CURRENT CHARACTERISTIC**

Rated Current	110%	135%	150%	200%	300%	500%
10-50 A	>4 h	150 s - 1h	10-1000 s	0.5-100 s	0.1-15 s	0.05-1 s

**TIME CURRENT CURVE**



**TEMPERATURE DERATING CURVE**



**OPERATING CONDITIONS**

Where the following conditions apply, fuses complying with this standard are deemed capable of operating satisfactorily without further qualification.

- Normal temperature: -5°C to 40°C , permissible operating temperature: -40°C to 125°C .
- The altitude of the normal site of installation of the fuses does not exceed 2000 m and permissible altitude site of installation does not exceed 5000 m .
- The air is clean and its relative humidity does not exceed 50 % at the maximum temperature of 40°C .
- Higher relative humidity is permitted at lower temperatures, e.g. 90 % at 20°C .
- Pollution grade III.
- Under these conditions, moderate condensation may occasionally occur due to variation in temperature.
- For operating conditions other than above, please contact manufacturer.

**STORAGE**

During transportation and storage, avoid water seepage and mechanical damage.

**WEB RESOURCES**

Download the latest technical documents: [www.adlerelectric.com](http://www.adlerelectric.com). Specifications are subject to change without notice.